

Yorkshire Philatelic Association

YPA 2010

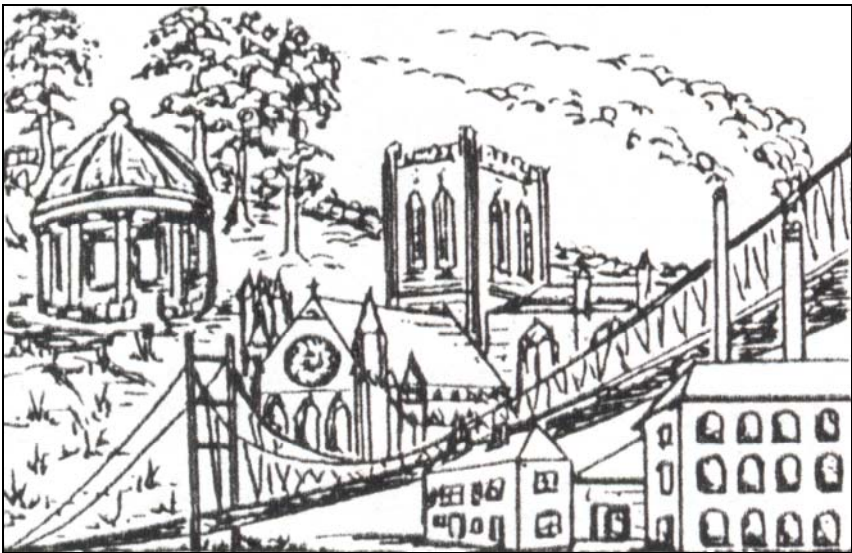
12 June 2010
Hosted by Leeds PS

1
8
9
0



2
0
1
0

Affiliated to the Association of British Philatelic Societies



YPA NEWS

April 2010

OFFICERS OF THE YPA: 2009-2010

President

David Brown

Vice-President

James Hartley

Chairman/Past President

Janet Bygate

Hon Secretary/Competition & Minute Secretary

Phil Harriman

email: p.harriman@ntlworld.com

Hon Treasurer

Cliff B Hopes FRPSL

ABPS Representative

John Sussex RDP, FRPS,L

Trade Liaison/Publicity Officer

Mike Lewis

Hon Youth Officer & Web Master

John A Edwards FRPSL

email: jedwards48@toucansurf.com

YPA News Editor

Greg Spring

25 Kirkstall Road, Sheffield, S11 8XJ

Tel: 07710 854567

email: editor@sheffielddps.org.uk

www.y-p-a.org.uk

Front cover – Local views, by Rachel McHugh.

The YPA Handbook

Secretaries are reminded that it is expected that the YPA Handbook will be available for reference at all meetings. **Please notify the Secretary and / or the Editor of any changes.**

Speakers List:

Wakefield PS - Please remove Malcolm Wright from the list of available speakers.

Competition Judging

No changes at this time.

What's on 2010

Local stamp fairs can be found in the advertisement on **page 6**.

- May 7 – Empire Mail: George V and the GPO.
July 25 Guildhall Art Gallery (**see page 10**)
- May 8 - 15 London 2010 International Stamp Exhibition
Business Design Centre, Upper St., Islington,
London N1 0QH
Visit **www.london2010.org.uk** for directions and information on events.
- June 12 YPA Stamp Fair and Convention (**page 3 & back cover**).
- July 22-25 Philatelic Congress of Great Britain, Holiday Inn,
212 Abbey End, Kenilworth, Warwickshire, CV8 1ED
Visit **www.abps.org.uk** for more information.
- July 16 - 17 York Racecourse Stamp and Coin Fair.
Visit **www.stampshows.net** for directions.
- Sept 15 - 18 Stampex, Business Design Centre, Upper St., Islington,
London N1 0QH. National Competitions.
- Nov 4 - 6 Philatex, Royal Horticultural Society Lawrence Hall,
Greycoat Street, Westminster, London SW1
Visit **www.stampshows.net** for directions.
- Nov 19 - 20 Leeds Stamp Fair, Pudsey (**inside back cover**).

Obituary
Jim Wood and Malcolm Wright

It is with sadness that the Wakefield Society has to record the death of two long term and prominent members in Jim Wood and Malcolm Wright. Both had been members of the society for over 40 years.

Jim Wood was a Past President of the Society and also served for many years as Treasurer. He built excellent collections of Wakefield Postal History and Scottish Postal History, both of which were displayed to other local societies. He was also well known for his calligraphy and for years was responsible for the creation of the competition certificates and the appreciation certificates given to visiting speakers. Sadly, due to declining health, Jim moved to Kent to be near his daughter but further deterioration led to his death on the 5th January.

Malcolm Wright was also a Past President of the Society and was for some years the Society Secretary. He had extensive collections of Australian material, especially airmail postal history and often exhibited to other societies. He was a regular attendee at the YPA annual convention, national and club auctions and at local stamp fairs. His other great interest was cricket and in earlier years he was a regular member of the Castleford team in the Yorkshire Council leagues. Malcolm died in hospital on October 11th 2009 after a very short illness.

Both Jim and Malcolm will be sadly missed and warm tributes were paid at the mid January meeting of the Society, with members standing in their memory.

Alwyn Peel

2010 Festival of Stamps Update from Yorkshire Philatelic Association

The Yorkshire Philatelic Association's contribution to the Regional events being held to compliment the 2010 Festival of Stamps and International Stamp Exhibition will be a special exhibition in conjunction with their Annual Convention for 2010. This will be held on Saturday 12 June 2010, and will be hosted by Leeds Philatelic Society on the occasion of their 120th Anniversary.

YPA 2010 will be held at the Pudsey Civic Hall, Dawson's Corner, Pudsey, Leeds LS28 5TA. This is a well known location for northern collectors, being the venue for the popular two-day stamp fair organised by the Leeds Philatelic Society each November, and having been the YPA Convention venue occasionally in the past.

A small group of Leeds PS members is already at work organising the event and can report that YPA 2010 is planned to include:

- A special exhibition of stamps and postal history of Great Britain,
- An exhibition of the YPA Annual Competition entries,
- About 25 dealers,
- The YPA Convention AGM followed by awards to competition winners, and
- If there are any suitable candidates, the signing of the Roll of Distinguished Yorkshire Philatelists.

There will be free admission and parking for the event and hot and cold refreshments. Opening hours to the public will be 9.30am to 4.30pm.

Preliminary details are available on the YPA web site at
www.y-p-a.org.uk/page_5.html

There is also a link to a map and directions to the venue. Further details will be added to the site as they become available.

General enquiries to: John A Edwards FRPSL, Hon. Secretary, Leeds Philatelic Society, 38 Carleton Green Close, Pontefract, West Yorkshire WF8 3NN **Tel:** 01977 793566 **email:** ponte38@msn.com

The introduction of pillar boxes to the Transvaal

by John Hunter

In 1997, the South African Post Office issued a single-stamp mini-sheet featuring street pillar boxes to commemorate the UPU's annual World Post Day for that year. Its design (shown below) is simple and elegant.



Perhaps the pillar box shown on the detachable postage stamp represents a modern South African model, however, none of the historical post boxes featured on the label part of the mini-sheet appear to relate to that country. The earliest pillar box in this collection of images, shown on the left side, is an 1850 model manufactured by L. I. Enthoven's foundry in Den Hague, The Netherlands. Others include standard models from British manufacturers such as Handyside (Derby), Cochrane Grove & Co (Dudley) and Smith & Hawkes (Birmingham).

The first street pillar box installed for public use in mainland Britain was erected in Carlisle in September 1853 (an experimental group of four boxes having been introduced in St Helier, Jersey in November 1852)¹. The Cape of Good Hope Post Office installed its first pillar boxes in Cape Town in 1860 (although an earlier box may

¹ BPMA archive information sheet "Pillar Boxes", 2009 (www.postalheritage.org.uk).

have been used for the first time in Graham's Town). The Boers of the Transvaal Republic and the Orange Free State, however, were not known for their progressive thinking, and written communication was not a major priority for them. Proposals for various civic improvements were quite commonly rejected by the Transvaal Volksraad (Boer Legislature) in Pretoria because they were not mentioned in the Bible and therefore were impious and not appropriate for Boers.

Although Johannesburg introduced its first pillar box in 1889, three years after the town was founded following the discovery of gold along the Witwatersrand, such innovations were not so readily accepted in Pretoria where the Volksraad exerted more control. During a discussion of a Postal Report in a meeting of the Second Raad (the upper chamber of the bi-cameral legislature) in May 1892, the conservative faction opposed the erecting of pillar boxes in Pretoria on the ground that they were "extravagant and effeminate". One speaker (Mr. Taljaard) said that "he could not see why people wanted to be always writing letters. He wrote none himself. In the days of his youth he had written a letter, and had not been afraid to travel fifty miles and more on horseback and by wagon to post it; and now people complained if they had to go one mile."²

Similar attitudes prevailed during a debate in the First Raad in August 1894, when a reduction in letter postage from 2d to 1d was proposed (to correspond to the reduced rates previously introduced into the Cape Colony and the Orange Free State). Several speakers opposed the motion on the grounds that the Postal Department was expected to show a deficit at the end of the year and that the main beneficiaries of such a reduction in postage rates would be the townspeople and 'speculators' (i.e., the much-disliked foreigners attracted to Johannesburg by the gold rush), and "certainly not the farmers" (i.e., the Boers). Mr De La Rey said that "if he resided in a town and speculated, he would be able to pay two pence". The proposed reduction in postage rate was rejected by 13 votes to 9.

² The Transvaal From Within. J. P. Fitzpatrick, 1900, p. 307.

Rotherham Stamps

30 Laughton Road
Thurcroft
Rotherham
S66 9LP

OPEN:

Tuesdays & Fridays
Other Days By Appointment

Tel: 01909 563394
or
01909 562927

Mobile: 07808 665472

Stamp Fairs

Dronfield at:

Coal Aston Village Hall
Coal Aston
Sheffield

3rd Sunday Every Month

Hull at:

St. Stephen's Church Hall
Freehold Street
Off Spring Bank

3rd Saturday Every Month

Morley at:

St. Mary's in the Wood
United Reform Church
Commercial Street

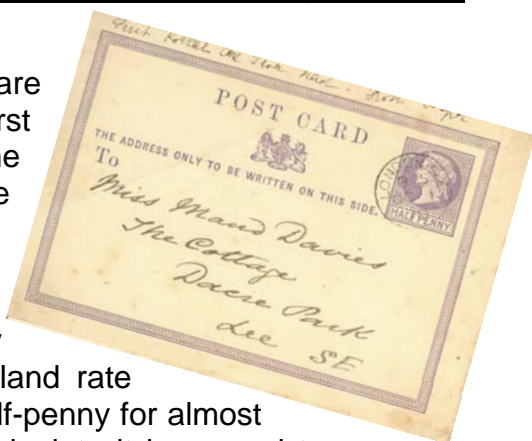
Last Saturday Every Month

The Purchasing Power of the Half Penny:

A brief Introduction to the Half-Penny Postage Stamp

by T. R. Peacock

Most stamp collectors are aware that Great Britain issued its first half-penny stamp on the 1st October 1870 to enable newspapers and printed matter up to 2 ounces to be posted. At the same time postcards impressed with a half-penny stamp were also issued. The inland rate for postcards remained at one half-penny for almost fifty years, 1870 to 1918 (at which date it increased to one penny). However, the half-penny rate was restored in May 1922 up



to May 1940 for printed matter and unsealed envelopes. This date marked the end of the half-penny stamp for postage in its own right. The last half-penny definitive stamp was issued on 3rd February 1968, and was finally withdrawn 30th June 1969. The purpose of this stamp was to pay for the late fee on letters posted on travelling post offices (the fee was increased to one penny on 1st July 1969).

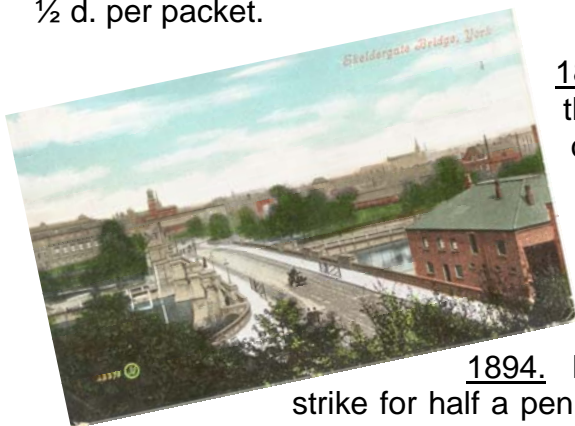
But what, over this almost one hundred year period, was the purchasing power of the half-penny in everyday life?

1st January 1870. The first provincial morning newspaper *The Northern Echo* was published, priced one half-penny. This newspaper is still printed today.

October 1870. Pawn Brokers made a charge of one ½ d. on all pawn tickets for loans up to 10/-. The interest rate was ½ d. per month for each 2/- lent on a pledge up to £2.0.0.

1876. At Whitby a crab below 3 inches across the broadest part was sold to children for half-penny each.

Also, in London a “Street Doctor” sold cough preventive tablets at ½ d. per packet.



1881. Skeldergate Bridge over the River Ouse at York opened with a toll of ½ d. per person (this was later cancelled and a ¾ d. in the pound charged on the rates for 20 years).

1894. Plumbers in York went on strike for half a penny an hour rise – from 7 d. to 7½d. (the strike lasted 10 weeks).

1896. the *Daily Mail* was founded and sold at a half penny per day.

1900. When Mafeking was relieved Union Jacks could be bought for ½ d. each.

1900's. A farthing bought a plain bun,
a half-penny bought a current bun, and
a penny bought a buttered bun.

Also, in Glasgow, broken biscuits sold at a ha' penny a packet, and a packet of chips, from the fish & chip shop, also cost a ha' penny.

1914. The cost of a loaf of bread at the Derby Co-Op increased by a half-penny.

1923. Woolworths sold half penny pea shooters.

1930. A box of safety matches sold at ½ d. per box.

1933. A boy recorded that his pocket money was a half-penny a week, rising by ½ d. per year.

1939. Londoners faced with the Blitz bought half-penny tickets for the Underground – the cheapest available.

1964. The final reference to the half-penny I found to date is for July when petrol rose by a half-penny a gallon!!

References to the half-penny could even be found in children's play:

A skipping song. Hole in my stocking, Hole in my shoe. Please can you spare a penny or two. If you haven't got a penny, A ha penny will do. If you haven't got a ha penny, God bless you

If you, the reader, can add any further use of the half-penny I should be grateful for your contributions.

YPA Archive

A very special thank you to Richard Wheatley of Leeds PS who uncovered some pieces of correspondence from 1954 pertaining to YPA matters and also Sheffield PS. This is the first material of this kind in the archive and opens a new little window on history. A great contribution.

2011 ABPS National Philatelic Exhibition

Friday 6th and Saturday 7th May 2011

Ponds Forge International Sports Centre, Sheffield

Sheffield city centre location with on-site parking, easy access to all public transport and the M1 motorway.

Close proximity to hotels, city-centre shops, restaurants and entertainment.

Philatelic displays, talks and meetings

Stamp and postcard dealers

Awards dinner

Sponsored by

GROSVENOR
AUCTIONEERS AND VALUERS



**Sheffield
Philatelic
Society**



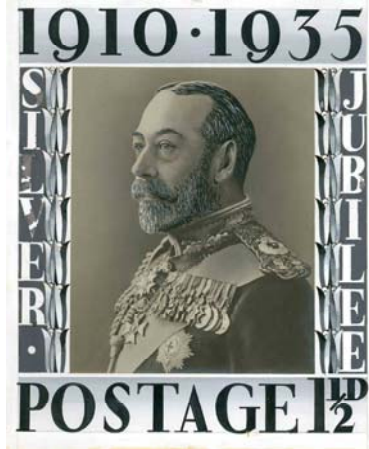
For further information visit www.sheffield2011.org.uk

**London 2010: Festival of
Stamps**



Empire Mail: George V & The GPO
7 May – 25 July, Guildhall Art Gallery, London

A major exhibition by The British Postal Museum & Archive (BPMA) and the Royal Philatelic Collection, Empire Mail: George V & The GPO is set to be a flagship event of the London 2010: Festival of Stamps when it opens at Guildhall Art Gallery in May 2010. Running from 7 May to 25 July 2010, the exhibition features many items from these unique collections and explores the life of King George V through his personal passions as a stamp collector.



George V became known as the 'Philatelist King' and this exhibition celebrates the centenary of his accession to the throne and the extraordinary period of design and innovation in the General Post Office during his reign.

Credit: ©Royal Mail Group Ltd 2010, courtesy of The British Postal Museum & Archive

George V's reign from 1910 to 1936 was an era of conflict and great change and saw the development of a number of communication methods which brought the world closer together. Developments during the King's reign included innovations in mail transportation, the first Atlantic air crossing and the rise of graphic design in the 1920s and 1930s. Posters, war time memorabilia, vehicles, pillar boxes, philatelic rarities and remarkable footage from the GPO Film Unit will be on display.

Film highlights include two pieces of footage, each captured at opposite ends of the King's reign, showing some of the developments in mail transportation that brought the world closer together. Pictures of an airborne plane carrying the first ever Airmail from London to Windsor in 1911 will be playing alongside footage of the first regular Airmail flight to Australia from 1934.

All items on display are sourced from the treasures of the BPMA and the Royal Philatelic Collection including exquisite stamps and stamp artwork. One of the star exhibits is a unique example of the 2d Tyrian Plum, significant because it is the only known used stamp of its kind. As 100,000 sheets of this new stamp were about to be issued, an example was posted to George V, then Prince of Wales, on 5 May 1910. By the time it had arrived, his father King Edward VII had died and Prince George had become King. On King Edward's death it was decided that the 2d Tyrian Plum should be withdrawn and the entire printing destroyed.



Credit: ©Royal Mail Group Ltd 2010, courtesy of The British Postal Museum & Archive

Further star exhibits include the Post Office Mauritius stamps which are among the rarest and most valuable in the world; the largest block of Penny Blacks (10) used on the first day they were valid (6 May 1840) and Kenya and Uganda £100 stamps which were used for fiscal purposes.

Visitors will also be able to uncover fascinating philatelic stories. For example, it is not widely known that Lawrence of Arabia created a stamp or that RMS Titanic, perhaps the most famous ship in history, was a mail ship.

This exhibition is just one of a number of events happening across the capital and beyond as part of the London 2010: Festival of Stamps. The Festival is a year long programme of exhibitions, events and activities marking the centenary of George V's, the Philatelist King's, accession to the throne. Key events include: London 2010 International Stamp Exhibition at The Business Design Centre; Post Abolition: Commemorative Stamps From Around the World at the Museum of London Docklands; The British Library Philatelic Rarities; Impressions of Africa at the British Museum and other exhibitions with partners including: Wimbledon Lawn Tennis Museum; Twickenham World Rugby Museum and Bletchley Park.

For further information about London 2010: Festival of Stamps visit www.london2010.org.uk

For further information about this exhibition, and travel directions, visit www.london2010.org.uk/empire-mail

For further information about The British Postal Museum & Archive web site visit www.postalheritage.org.uk

Guildhall Art Gallery and Roman Amphitheatre is home to the City of London's art collection. Admission to the Guildhall Art Gallery costs £2.50 for adults (concessions £1). Entry is free all day on Fridays and from 3.30pm on other days. Guildhall Yard, London, EC2. www.guildhall-art-gallery.org.uk

Royal Philatelic Society London On-Line Catalogue

The Royal Philatelic Society London has begun putting its massive archive on-line for use by philatelists the world over. The catalogue contains indexes of their own holdings, as well as the entire contents of the *London Philatelist*, dating from 1892 (available for purchase as individual downloads), and some very innovative resources such as the *Creeke Index*, an ambitious listing of all English language philatelic articles up to the end of 1928, and the *Cumulative Indexes* of articles from many specialist society journals. A full description can be found at www.rpslcatalogue.org.uk

Royal Household Postal History: Part 2

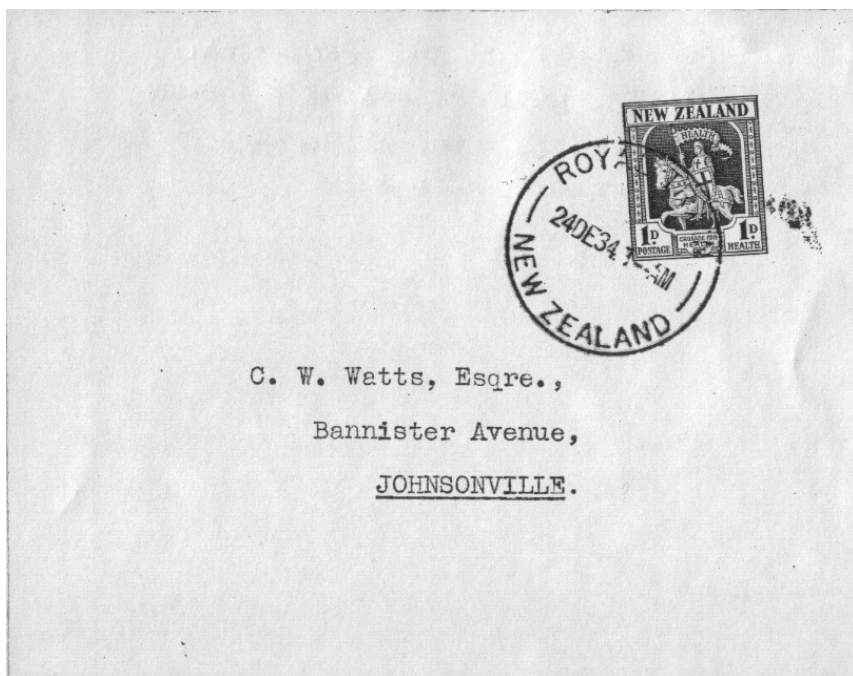
By Keith Branigan

Continued from the last issue...

Another interesting area of 'Royal' mail to collect, but a more difficult and generally more expensive one, is that of special events. These include not only births, marriages and deaths, but also coronations and the odd abdication! These items are often individual letters with no direct postal history interest (letters to the Duke of Windsor on his honeymoon for example!) but sometimes special postal facilities are involved. Coronations for example produce correspondence from the Earl Marshal's Office, and from Royal household departments involved in the arrangements, all with their own cachets. At the 1911 coronation, a special postmark was produced to be used on telegrams from the telegraph office established at Westminster Abbey; it is one of the rarest of all 'royal' postmarks. The 1937 coronation saw the establishment of camps for visiting military contingents including one at Hampton Court palace, which had its own camp postmark.

For those who want to expand their field of vision, the Coronation Durbars of 1903 and 1911 in India provide a wonderfully rich field of interest. Material from the 1911 Durbar is quite prolific - not surprising given that it involved 50,000 troops, and over 5,000 official guests and native princes, as well as the King and Queen and their large staff. The coronation camp covered 20 square miles and in addition to its main post office it had 24 sub post offices (12 for the civilian camp, and 12 for the military). Each of these had its own postmark (in two varieties, furthermore). There were also fifteen other special postmarks for different purposes, plus the postmarks used at the Central Post Office, and the ones used by the King's own post office. Altogether there were something like 70 different postmarks in use at the Durbar - so there is plenty of scope for many years of happy searching through boxes of Indian postal history at Stamp fairs.

Royal visits abroad in general are a fascinating field for postal history, even if one ignores all the special stamps and postmarks commemorating a visit and sticks strictly to postal facilities provided for the royal party. India again provides some opportunities, particularly the Prince of Wales' visit in 1922 which went on for about five months and used special dispatch, receiving and registered postmarks in the so-called Camp P.O. - in fact a TPO attached to the various trains which took the Prince around the continent. Other royal train postal facilities are represented by postmarks for royal tours of Africa in 1925, 1934, and 1947, Australia and NZ in 1934 (see over the page), and Canada in 1939, 1951, and 1973. Whilst the Australian and NZ marks are scarce and expensive, some of the 1947 South African and 1939 and 1973 Canadian can be picked up for £2-£3. Apart from these special Royal TPO postmarks, an enormous variety of other postal arrangements have been used for 'Royal' mail on overseas tours and these provide an endless, if difficult to find, source of material.



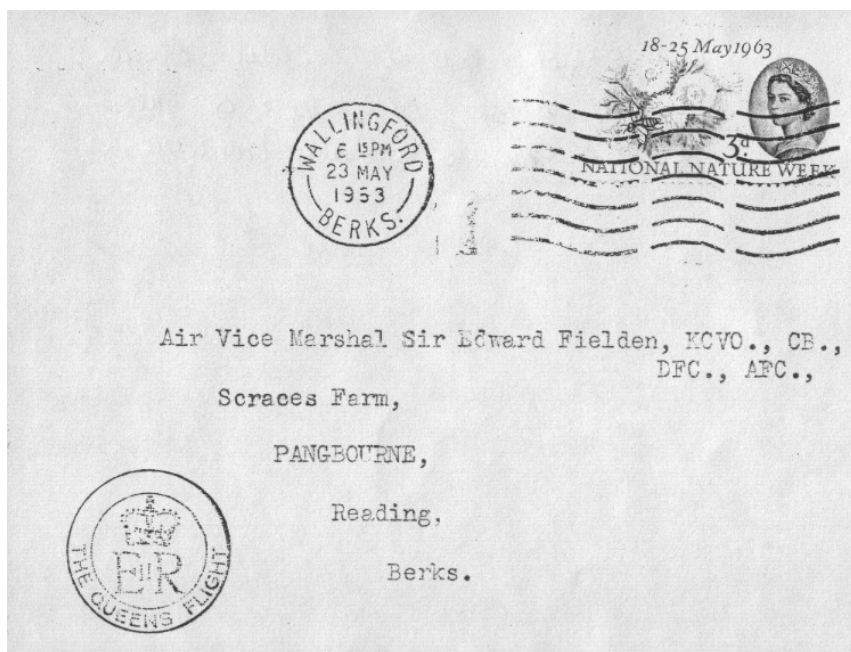
Early royal visits were of course carried out by sea, and collecting mail to and from the royal yachts, and the various liners and battleships which served temporary service as royal yachts, is another rewarding field. The first postmark for mail from a royal yacht was introduced in 1901 and although rarely seen a postmark remained in use into the 1930's. When *Britannia* was put in service in 1954, a series of certifying cachets were introduced but not a special postmark. Apart from general cachets for the yacht, no less than nine different officers or officials had cachets for their mail. All this mail went through the Mail Office - which a visit to *Britannia* at Leith reveals to be no bigger than a large broom cupboard!



Before *Britannia*, long-distance tours were undertaken in a variety of liners and warships. Of these, the world tours of 1901 in the *Ophir* and of 1953-54 in the *Gothic*, are the best represented in the market place.

Although the Kings Flight was established in 1936, the first royal tour to use it was that in South Africa in 1947 - and even then the short-range Vickers Vikings were flown by the crew to Africa and met up with the royal family, who traveled in the battleship

Vanguard, at Cape Town. The Flight had its own certifying cachet and this has continued in use, with various modifications to this day. But many overseas tours have been undertaken in commercial airliners wholly or partly taken over for the purpose. Covers carried on these flights have no official certifying cachet, but often carry endorsements signed by the pilot to confirm they derived from a 'Royal' flight. A splash of colour can be added to a royal flights collection by some of the recent commemorative covers showing planes of the Queen's Flight, often signed by the pilot or the Flight's commanding officer, which can be found for £5 - £8. They may not be 'philatelic' but they're very attractive!



Shortly after I began collecting 'Royal' mail, Glen Morgan published his excellent book on **Royal Household Mail** (BPT 1992), and this has stimulated interest (and prices). But there is so much material, and such a variety of it, out there that it is still possible to find new and unusual items to expand an existing collection, or to acquire for a modest outlay enough material to begin a 'Royal' mail collection from scratch.



Leeds Philatelic Society
Leeds Philatelic Society

ANNUAL STAMP FAIR

PUDSEY CIVIC HALL

Dawson's Corner, junction of Ring Road (A6120)
And Leeds-Bradford Road (A647)

Friday 19 November 2010

11am to 6pm

Saturday 20 November 2010

10am to 4.30pm

**STAMPS AND POSTAL HISTORY
OVER 30 DEALERS ATTENDING
FREE ADMISSION AND PARKING
HOT AND COLD REFRESHMENTS**

Enquiries: Telephone 0113 268 2370

YORKSHIRE
PHILATELIC
ASSOCIATION

www.y-p-a.org.uk

YPA  2010

12 June 2010
Hosted by Leeds PS



2010 ANNUAL CONVENTION

Saturday 12 June 2010

At Pudsey Civic Hall

9.30am to 4.30pm

EXHIBITION & YPA COMPETITION

ABOUT 25 DEALERS

STAMPS & POSTAL HISTORY

FREE ENTRY & PARKING

HOT & COLD REFRESHMENTS

Table Bookings: 0113 268 2370
General Enquiries: 01977 793566