

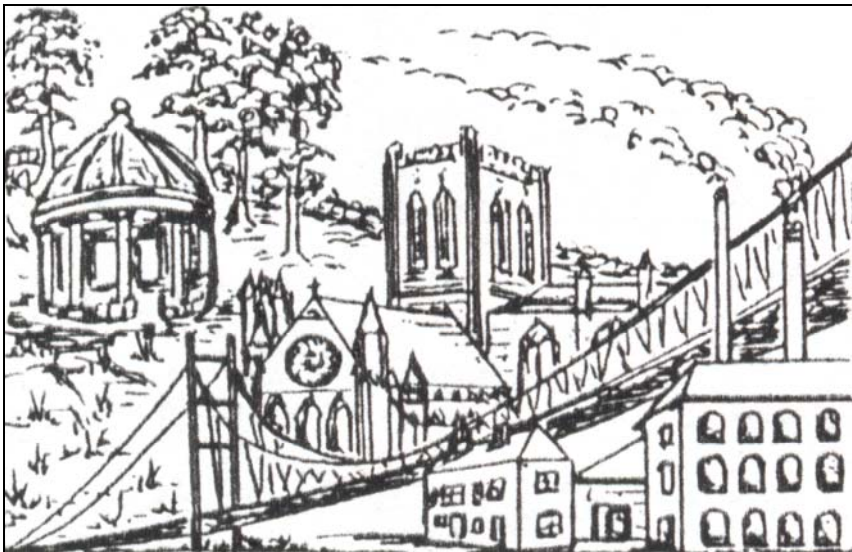
Yorkshire Philatelic Association

SHEFFIELD

(1700)

2009

Affiliated to the Association of British Philatelic Societies



YPA NEWS

April 2009

www.y-p-a.org.uk

OFFICERS OF THE YPA: 2008-2009

President

David Brown

Vice-President

James Hartley

Chairman/Past President

Janet Bygate

Hon Secretary/Competition & Minute Secretary

Phil Harriman

email: p.harriman@ntlworld.com

Hon Treasurer

Cliff B Hopes FRPSL

ABPS Representative

John Sussex

Trade Liaison/Publicity Officer

Mike Lewis

Hon Youth Officer

John A Edwards FRPSL

email: jedwards48@toucansurf.com

YPA News Editor

Greg Spring

25 Kirkstall Road, Sheffield, S11 8XJ

Tel: 07710 854567

email: editor@sheffielddps.org.uk

www.y-p-a.org.uk

Front cover – Local views, by Rachel McHugh.

The YPA Handbook

Secretaries are reminded that it is expected that the YPA Handbook will be available for reference at all meetings. **Please notify the Secretary and / or the Editor of any changes.**

The Wakefield delegate to the YPA is now:

Mr D. G. Horner, 18 Broadgate, Ossett, Wakefield, WF5 0PU

Tel: 01924 271364 – email: davidghorner1@btconnect.com

Speakers List:

If you wish to be added to the speakers list please notify the Secretary and / or the Editor.

No changes at this time.

Competition Judging

No changes at this time.

What's on 2009

Local stamp fairs can be found in the advertisement on page 17.

June 20 YPA Stamp Fair and Convention (**see page 2**).

July 16-19 Centenary Philatelic Congress of Great Britain, Copthorne Hotel Manchester, Clippers Quay, Salford Quays, Manchester

July 17 – 18 York Racecourse Stamp and Coin Fair.
Visit **www.stampshows.net** for directions.

Sept 16 - 19 Stampex, Business Design Centre, Upper St., Islington, London N1. Display by Battle of Britain Fund.

Sept 19 Square Pillar Boxes – Reshaping a British Icon. British Postal Museum Store (**see page 9**)

Nov 5 - Nov 7 Philatex, Royal Horticultural Society Lawrence Hall, Greycoat Street, Westminster, London SW1
Visit **www.stampshows.net** for directions.

Nov 20 - 21 Leeds Stamp Fair, Pudsey (**see back cover**).

June 26 - 27 Thematix, Harlequin's Rugby Ground, Twickenham
Visit **www.brit-thematic-assoc.com** for directions.



63rd Annual YPA Convention
John Hunter, President, Sheffield PS

Sheffield
Philatelic
Society

I would like to take this opportunity to extend a warm welcome to all members of affiliated societies within the YPA to the 63rd annual YPA Convention, which will be taking place on June 20th this year at the Sheffield Wednesday Football Club Hillsborough Conference Centre. I hope that you will agree that by organising invited displays from both the Royal Philatelic Society London and the British Postal Museum and Archive, in addition to the YPA competition entries, Sheffield has endeavoured to provide a varied and entertaining day-out for all visiting collectors and enthusiasts. The Society itself will be presenting several displays, including an exhibit of Sheffield postal history and another on a football-related theme, appropriate to the prestigious venue.

The SPS has gained sponsorship for the event from two philatelic auction houses and, at the present time, 23 stamp, postal history and postcard dealers and 7 specialist societies have 'signed-up' to attend. The BPMA has very kindly agreed to provide prizes from its gift shop for the raffle.

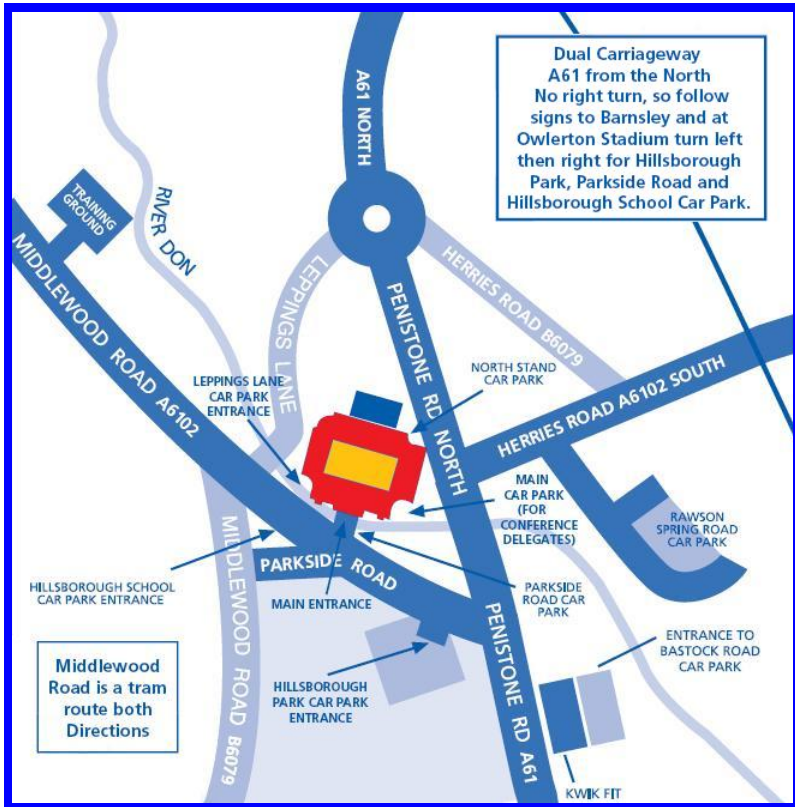
To be completely successful, an event of this scale relies upon sufficient attendance from collectors and other visitors and I hope that you will offer your support to make the county's annual convention in 2009 a worthwhile occasion. To run smoothly, the event will also benefit from the services of an adequate number of stewards and willing assistants to help assemble, clean and disassemble the display frames, to help coordinate the dealer arrivals and departures and to act as customer advisors and 'security' for the displays throughout the day. The SPS would be very appreciative of any offers of assistance from members of affiliated societies in this regard. If you would like to volunteer to help, please contact me using the details shown below so that we can prepare a list of names and times in advance of the convention day. I look forward to seeing you there.

For more information, please contact John Hunter
Tel: 0114 251 4883 email: president@sheffieldps.org.uk
www.sheffieldps.org.uk/2009

Travel Directions

By Car - from the North exit the M1 at junction 36. From the South, leave the M1 at junction 33. From the West, take the A57 for Sheffield then A6101. In all cases aim for the A61, Penistone Road. Exit at round-a-bout shown into Leppings Lane. Turn left into Catch Bar Lane, then join Parkside Road. Entrance to conference centre on left and large car park on right a little further on.

For those with SatNav the venue postcode is S6 1SW



By Train - Sheffield railway station is situated near the city centre, 3 miles from the ground. From there, inter-city rail services run to London St. Pancras, Chesterfield, Derby, Leicester, Birmingham, Bristol, Leeds, York, Manchester and Manchester Airport, Rotherham, Doncaster and Hull.

By Supertram to Leppings Lane - from the railway station, take the South Yorkshire Supertram to the Cathedral stop, then change onto a tram for Middlewood (yellow route).

By Bus to Leppings Lane - to the venue from: Flat Street Bus Terminus 17, 53, 77 and 80; Angel Street 74 and 74a; Snig Hill 85 and 86.

A Grand Day Out

by Phillip Hariman

It is the third week in August 2008. High summer is here - some chance in this summer! The phone rings and it is Tony Walker of Newcastle P.S. You may know of him, Tony has one of the best collections of pre-decimal Machin definitives ever assembled.

"You collect Machins don't you?" he asks.

"Well yes, but mainly on the booklet side." I answer.

"Right then, I've got a chance to visit Arnold Machin's house before everything is sold off at auction. Would you fancy going during the first week in September?" he continued.

"Yes, that might be an interesting thing to do," I said after a few seconds thought.



"Is there anyone else that you might think would be interested, if we get a car full it would cost less as the place is in wildest Staffordshire?"

"David Foster, of Middlesbrough PS has always collected Machins and he is always up for something like this. I'm going abroad in the next couple of days so can you get in touch with him?" I answer.

"Leave it to me and I will contact you when you get back to let you know the arrangements," said Tony.

“Great! I look forward to hearing from you,” I said as I put the phone down.

On Tuesday, September 2nd Dave and I met with Tony and Mike Gibson, a well known collector from Hexham, at Scotch Corner and set off across country to Staffordshire.

“I don't know what we will see but it's a day out and with the house and things being sold in the near future we certainly won't get another chance,” said Tony.

About four hours later we were parked outside a solicitor's office in Penkridge, a town just off the M6. Adam Tedstone is the solicitor for the Machin estate and he was pleased to meet us. He first took us to Cuttlestones Auctioneers where we were shown three items to be auctioned in the very near future. The first was the original plaster relief mould of the Machin head used to in preparing the Machin pre-decimal stamps. This item was sold for £15,700 in the auction.



The second was the art work that Arnold Machin produced for the 2d pre-decimal definitive stamp. This was sold for £1,200 in the auction.

The last item in the Cuttlestone sale was a plaster cast for the obverse of a coin. Machin produced the artwork for the original GB decimal coins. This sold for £270 in the auction.

We were asked what we thought that the estimates for the three items should be and we did suggest the the Machin head cast would be somewhere between £10,000 and £20,000, just a bit out of our range!

The auctioneer was only too pleased that we should take photographs of the items. We took the pictures and wished the auctioneer farewell.

Adam then took us through the narrow byways of Staffordshire to the Machin family home, Garmelow Manor. When we arrived Adam organised that the house be opened up for us so that we could wander round it at our pleasure! We all went into the Machin workshop/studio that was housed in some of the farm buildings. Here there were paintings; sculptures and drawings in every state from just started to complete. It was fascinating to look at it all. It was quite easy to identify the things produced by the different members of the family. Patricia had her own style of painting, distinctively different to Arnold's.



Francis's sculptures were very different to his father's Francis, the only son of Arnold and Patricia, had begun to set up an exhibition studio to show the many items left by his father; the accomplished art works of his mother and his own material. The Machin family had set up the Machin Arts Foundation to encourage young people to



become artists by funding them during their studies. The exhibition was a testament to the fantastic artistic skills of the Machin family.

In one of the rooms there was framed original art work for the Machin head stamps. Some of this artwork was reproduced in the prestige booklet celebrating Arnold Machin's life and the 40th Anniversary of the stamp's issue. I went round snapping

photographs of practically everything. Thank goodness for digital cameras!

On one shelf was a plaster mould of Prince Charles, perhaps it was to be the replacement on the Machin stamps!

In one display frame was an interesting article from 1956 when Patricia chained Arnold to a lamp post. The ornate Victorian lamp post was due to be pulled down and Arnold wanted to make a protest against its removal. The event was recorded in the daily papers and a number of celebrities wrote to Arnold in support of his protest. The council took the post out and delivered it to the Machin house. Arnold is reported to have said that he would grow roses up it!



Sitting on one bench was a letter from the Royal Mail informing Arnold that his design for the definitive stamps had been accepted and it was being presented to the Queen.



There was material concerned with coin design too. Machin designed the obverse (head-side) of the original decimal GB coins and quite a number of coins and banknotes for other nations. We did handle many of the objects in the workshop/studios and in the exhibition. We looked in the gardens, thought the frequent showers cut this option quite a good bit! It was obvious that the Machin family were proud of their home and enjoyed showing off their design capabilities in their property. The large lake would have been a wonderful place to enjoy a good glass of wine on a warm summer evening whilst others were just messing about in one of the boats from the fine boathouse. There were a number of hidden nooks where sculptures were to be found.



There was an amazing variety of objects stored in the outbuildings. There were many farm implements and vehicles. In one section was a Rolls-Royce Merlin aero engine of the type used in the “Spitfire” (it sold for £25,000 in the auction). I dread to think of the postage charge to get that home!

Inside the house we could look at and handle the Machin possessions, though many were being packed up ready for the auction. Pretty well everything would be sold, pottery; furniture; books and tools would all go under the hammer. At the end of the afternoon we ended up in the kitchen, sitting round the Machin kitchen table having a cup of tea with the caretakers. We took the opportunity to thank Adam Tedstone for his time and allowing us to make this memorable visit.

I would like to thank Cuttlestone Auctioneers; Adam Tedstone and my three travelling companions, Dave Foster, Mike Gibson and particularly Tony Walker. We all agreed, as we drove back northwards through torrential rain, that we had had “A Grand Day Out!”

THE BRITISH
POSTAL
MUSEUM
& ARCHIVE

Wartime survivor returned to the BPMA

The British Postal Museum & Archive (BPMA) is delighted to announce that items that have been on loan at the Museum of London for almost 100 years have now been returned to the BPMA.

In 1912, the then General Post office (GPO) loaned a variety of items to the London Museum (now Museum of London), the majority of which have now been returned to the BPMA.

Amongst the items that were given as a loan was one of the ‘time plates’ from one of the first six London post boxes from 1855. Unfortunately, the post box was destroyed during the Second World

War, but luckily the unique collection plate survived and has now been returned to the BPMA. None of the first six London post boxes has survived to this day. The first six London pillar boxes were rectangular in shape and around five feet tall (pictured below).



Other items returned to the BPMA include three truncheons issued to postal staff in 1843 in response to the Chartist riots; a Mail Coach Guards horn; a Coffee House Date Stamp, a Flintlock pistol and a Timepiece (complete with key). Timepieces were carried by Mail Coach Guards and postal staff on the Travelling Post Offices (TPOs). There was no national standard time until 1880, and the mail guard would carry an official timepiece set to 'London time'. This was locked shut and any deviations from contracted arrival and departure times were recorded on special time bills.

The unique collection plate is now held at the British Postal Museum Store, Debden, Essex, and can be viewed during scheduled Open Afternoons and Evenings, as well as at the Discover Session on Square Pillar Boxes, 19 September 2009.

Julian Stray, Assistant Curator at the BPMA commented:

“We are delighted to bring these wonderful postal artefacts back into our collection after so long. They offer a glimpse of mail practices long since abandoned, and can hopefully now find a new audience”.

Square Pillar Boxes – Reshaping a British Icon will take place at the British Postal Museum Store, Debden, Essex on Saturday 19 September 11.00am – 3.00pm. Over one hundred and fifty years worth of archival files and objects will be utilised in this exploration of the relative merits of square over round as a practical design for a pillar box. Visit www.postalheritage.org.uk for more information.

Centenary Philatelic Congress of Great Britain **16-19th July 2009**

I am delighted to inform you that following the success of the 2008 Philatelic Congress at Stratford upon Avon, the Centenary Congress will be held at the Copthorne Hotel Manchester, Clippers Quay, Salford Quays, Manchester.

The Copthorne Hotel Manchester is situated in the superb Salford Quays area near to the Lowry Museum, Imperial War Museum and Manchester United's Old Trafford.

The transport links are superb, just 1 minute from the end of the M602 (Spur off the M62). The MetroLink system also provides an efficient link between Manchester Piccadilly Station and Exchange Quay which is just 100 yards from the Copthorne.

There will be a full programme of displays. The principal Congress lecture will be *The Evolution of Congress from the Past to the Future*.

This will include some rare early Congress material. The RDP ceremony and presentation of the Congress Medal is scheduled to take place at the historic Manchester Town Hall on the Friday afternoon. This will be followed by a reception at the Town Hall. The traditional Congress banquet will be held at the Hotel on the Saturday evening.

The Congress is being hosted by members of the North West Philatelic Federation. Paul Gaywood has accepted the invitation of the ABPS Congress Committee to be Chairman of Congress.

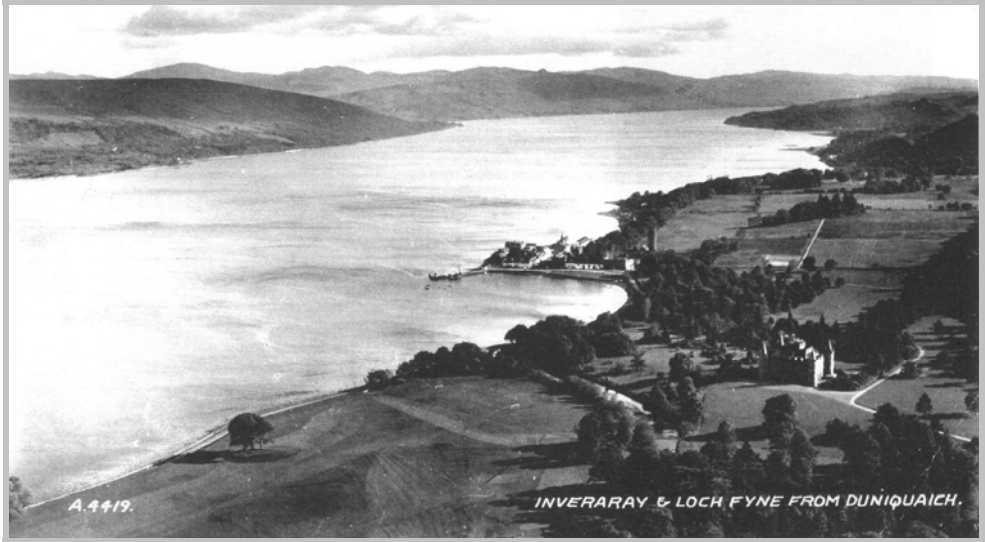
A very competitive package has been negotiated with the Hotel. Booking forms will be sent out early in 2009. If you are either unable to stay for the whole of Congress or you live locally, Day Delegates will be very welcome to attend on any day of Congress to see the spectacular displays.'

Gerald Marriner FRPSL
Chairman ABPS Congress Committee

The Postcard

by T. R. Peacock

A couple of years ago, looking through a batch of postcards at a dealer's stand, my attention was drawn to a black-and-white photograph card of "Inverary and Loch Fyne from Dunaquaich",



which I purchased. At home, upon a closer inspection, I found that the postcard had been posted on the 7th August 1941 in London W1. The postage stamp was a George VI 2d orange, which was the correct postal rate, and it was addressed to: Mrs. A.C. Bossom, Allington Castle (1), Maidstone, KENT. But what made the postcard a real collector's item of World War II were the 131 words of "information" the writer had sent to Mrs. Bossom:

"Dear Mrs. Bossom, This is a marvellous spot which I've known since the days of my youth! An Old World village, very peaceful and quiet. I walked about 20 miles over the hills to it the other day and found the Loch a hive of activity. The town of Inverary was chock-a-block with sailors and soldiers. There were 4 large troopships being loaded. A large Polish vessel and all sorts of destroyers

and cruisers keeping guard. Don't tell anyone in the South but this quiet spot must be their secret loading place for the war, while the proper wharfs etc. load the machinery. Churchill was up here last week with Sir John Dill and watched a whole scale invasion etc. I was so surprised to see it all that it still seems unreal. Love to you from (could be B.H. or B.L.).”

After carefully reading the postcard questions began to arise: Was the information correct? Who was Mrs. A.C. Bossom? Who had written the card? And why had the card not been censored?

On the outbreak of the Second World War, 3rd September 1939, the small town of Inverary, standing on the shore of Loch Fyne, little thought that very soon it was to play an important role in the eventual defeat of Nazi Germany. But such was to be the case.

In June 1940, after the fall of France, the Prime Minister, Winston Churchill, began to give thought to an invasion of Europe. He appointed Admiral Keyes to search for a suitable place to train troops for this ambitious plan. The choice Admiral Keyes made was Loch Fyne and the town of Inverary.

On the 1st October 1940 Vice Admiral Theodore Hallet R.N. assumed command of No. 6 Combined Operation Training Centre, and life in the area changed almost overnight. Detachments of Royal Engineers and Pioneer Corps arrived along with civilian contractors, and very soon eight camps were built, including a naval camp known as “HMS Quebec”. Many large houses and buildings in Inverary were requisitioned.

By the end of the year, the first troops had arrived and a rigorous training programme of amphibious landings and inland attacks was implemented. The location proved very successful and on the 27th June 1941 the Prime Minister, accompanied by the chief of the Imperial General Staff, Field Marshall Sir John Greer Dill and many other high ranking officers, visited the site. From a sandbagged shelter they watched a landing exercise including the demolition of barbed wire entanglements and an advance inland.

On the 28th June 1941 Winston Churchill sent the following to Admiral of the Fleet Sir John Keyes:

“Will you please convey to the officers and men whom I inspected yesterday at the exercises in Loch Fyne, and on shore, my congratulations on the high efficiency and keenness which was everywhere apparent. For the success of the operation for which they are being trained perfect co-operation between units of all three services is essential, and to achieve this, long, hard and patient training is inevitable. It was evident that this was cheerfully accepted and loyally carried out. I hope that the opportunities which they are eagerly awaiting will soon be made for them (2), and when the time comes I wish them all good success.”

So the answer to the first question was “Yes”, but “Don't tell anyone in the South”. The second question. “Who was Mrs. A.C Bossom?” Mrs. Bossom (nee Elinor Dittenhofer) was the second wife of Mr. Alfred Charles Bossom (3), M.P. for Maidstone, Kent. During the War Mrs. Bossom was in charge of comforts for the troops of Kent and continued to live at Allington Castle, the family home. The answer to the third question, the writer of the postcard, remains a mystery and leaves many other questions unanswered. He wrote. “Dear Mrs. Bossom”, signed “Love to You” with initials only, so he must have been reasonably well known to Mrs. Bossom.

But why should he have written in such detail about a highly important military establishment? And on a postcard? Did he not know that careless talk costs lives? This was 1941, and the “tide had not yet turned”. Why did he expect Mrs. Bossom to be so interested in such wartime matters? Why was the postcard not censored? During the war a vast amount of mail was opened and the content censored (4). But it is rare to find a postcard censored. Did the writer consider this point? The answer may well be “yes”. The card was not posted in Scotland where, due to a low amount of mail, it may have been noticed, but posted late in the afternoon in

London, where no doubt a large amount of mail was handled and a tourist-type postcard would raise little or no attention: and thus it arrived at Allington Castle.

To conclude. It would appear that security in and around Inverary was slack. The writer of the postcard walked across the hills, viewed the Loch activity, walked into town, bought a postcard, heard about the visit of the VIPs, and walked away to tell the tale on an open postcard!

Finally, how many troops who were stationed and trained at Inverary would echo the words of Robert Burns, who wrote about the area:

“If Providence has sent me here,
‘Twas surely in His anger.”

Notes

1. Allington Castle is situated on the West Bank of the River Medway, Kent. It was renovated in the early 20th century and in 1951 became a Carmelite Nunnery.
2. Operation Torch - the invasion of North Africa, 8th November 1942. The training for the operation had taken place on and around Loch Fyne in Scotland. “The Story of P.O.- (1944) page 146.
3. Mr. A.C. Bossom was head of the British Building Mission to the USA in 1943. He brought back the idea of the “pre-fab” (the post-war house).
4. Censored - a letter from a young evacuee in Inverary to his parents, giving similar details to the postcard, read on receipt: “Dear Mum & Dad [REDACTED] Love Jim”.

Acknowledgements: Sir Clive Bossom, Heather Rook (Maidstone, Kent). Norman Hurst (Coulson, Surrey) and Stephen and Jennifer Benson (Leyland, Lancashire).

YPA is Back on Line

by John Edwards

We have our web site back again after an interruption. This time we have our own domain name and won't get shut down! You can find us at www.y-p-a.org.uk

The site includes a diary of events covering the YPA area and also national and international events. There is a page of useful links to national organisations and specialist societies. Others giving details of services provided by the YPA, information about forthcoming conventions and a list of members honoured on the Roll of Distinguished Yorkshire Philatelists ... and more.

Society secretaries have been circulated with a copy of their society entry. Some have replied, but a few still need to provide amendments. Increasingly the internet is becoming the preferred source for all knowledge, and prospective members may be hunting for a society to join right now – so please make sure your correct details are shown.

There are several new features. The YPA is offering affiliated societies their own web page in addition to brief contact details for all societies. The cost is a mere £5 per year to help defray the cost of maintaining the site. The webmaster will help to design your page which can include full details of society activities: the syllabus, auctions, special events, a brief history – in fact anything you think will attract new members. You don't even need to have internet access. The only stipulation is that societies appoint a member as the contact point to provide amendments to keep the page up-to-date, especially changes of secretary.

Other new features are a problems page – *Ask the Sage* – where we'll attempt to solve your philatelic problems, and a page showing commemorative covers of past YPA Conventions.

The webmaster welcomes comments and suggestions for improving the site:
John Edwards, 38 Carleton Green Close, Pontefract, West Yorkshire WF8 3NN
Tel. 01977 793566 email: jedwards48@toucansurf.com

Rotherham Stamps

30 Laughton Road
Thurcroft
Rotherham
S66 9LP

OPEN:

Tuesdays & Fridays
Other Days By Appointment

Tel: 01909 563394

or

01909 562927

Mobile: 07808 665472

Stamp Fairs

Dronfield at:

Coal Aston Village Hall
Coal Aston
Sheffield

3rd Sunday Every Month

Hull at:

St. Stephen's Church Hall
Freehold Street
Off Spring Bank

3rd Saturday Every Month

Morley at:

St. Mary's in the Wood
United Reform Church
Commercial Street

Last Saturday Every Month



Leeds Philatelic Society
Leeds Philatelic Society

ANNUAL STAMP FAIR

PUDSEY CIVIC HALL

Dawson's Corner, junction of Ring Road (A6120)
And Leeds-Bradford Road (A647)

Friday 20 November 2009

11am to 6pm

Saturday 21 November 2009

10am to 4.30pm

**STAMPS AND POSTAL HISTORY
ABOUT 40 DEALERS ATTENDING
FREE ADMISSION AND PARKING
HOT AND COLD REFRESHMENTS**

Enquiries: Telephone 0113 268 2370